

# POSTAGE RATE ESTIMATE REFERENCE

BASED ON BULK MAILINGS FOR GREENVILLE NC \*rates subject to change

E-DATE  
JAN  
2020

MAILING TYPE	NON-AUTOMATED RATE		ACCULINK AUTOMATED RATE	
<b>FIRST CLASS POST CARD</b>				
Min. Qty: 200 Full Rate Postage Permit Imprint	<b>(FIRST CLASS ONLY)</b>		<b>(FIRST CLASS ONLY)</b>	
500 Presort				
Min. Size: 3.5" x 5"	Presorted: 0.285		5 Digit: 0.26	
Max. Size: 4.25" x 6"	Single: 0.35		AADC: 0.27	
Thickness: .007-.016"			MXD AADC: 0.276	
<b>FIRST CLASS LETTER</b>				
Min. Qty: 200 Full Rate Postage Permit Imprint	<b>(FIRST CLASS ONLY)</b>		<b>(FIRST CLASS ONLY)</b>	
500 Presort				
Min. Size: 3.5" x 5"	Presorted: 0.46		5 Digit: 0.389	
Max. Size: 6.125" x 11.5"	Single: 0.55		AADC: 0.419	
Weight: 1 oz.	Add'l Ounce 0.15		MXD AADC: 0.439	
Thickness: .007-.25"				
<b>FIRST CLASS FLAT</b>				
Min. Qty: 200 Full Rate Postage Permit Imprint	<b>(FIRST CLASS ONLY)</b>		<b>(FIRST CLASS ONLY)</b>	
500 Presort				
Min. Size: 6.125" x 11.5"	Presorted: 0.81		5 Digit: 0.43	
Max. Size: 12" x 15"	Single: 1.00		3 Digit: 0.577	
Weight: 1 oz.	Add'l Ounce 0.20		ADC: 0.62	
Exceeds 1 or more letter dimension			MXD ADC: 0.716	
Thickness: .25-.75"				
<b>STANDARD LETTER Up to 3.5 oz</b>				
Min. Qty: 200 pcs or 50 pounds	AADC: 0.295		5 Digit: 0.259	
Min. Size: 3.5" x 5"	MXD AADC: 0.305		AADC: 0.284	
Max. Size: 6.125" x 11.5"			MXD AADC: 0.299	
Thickness: .007-.25"				
<b>STANDARD FLAT</b>				
	<b>Up to 4.0 oz</b>	<b>Over 4.0 oz</b>	<b>Up to 4.0 oz</b>	<b>Over 4.0 oz</b>
Min. Qty: 200 pcs or 50 pounds	5 Digit: 0.501	0.267	5 Digit: 0.418	0.184
Min. Size: 6.125" x 11.5"	3 Digit: 0.594	0.36	3 Digit: 0.543	0.309
Max. Size: 12" x 15"	ADC: 0.65	0.416	ADC: 0.608	0.374
Weight: Less than 16 oz.	MXD ADC: 0.685	0.451	MXD ADC: 0.666	0.432
Exceeds 1 or more letter dimension		plus per		plus per
Thickness: .25-.75"		pound 0.935		pound 0.935
<b>NONPROFIT LETTER Up to 3.5 oz</b>				
Min. Qty: 200 pcs or 50 pounds	AADC: 0.174		5 Digit: 0.138	
Min. Size: 3.5" x 5"	MXD AADC: 0.184		AADC: 0.163	
Max. Size: 6.125" x 11.5"			MXD AADC: 0.178	
Thickness: .007-.25"				
<b>NONPROFIT FLAT</b>				
	<b>Up to 4.0 oz</b>	<b>Over 4.0 oz</b>	<b>Up to 4.0 oz</b>	<b>Over 4.0 oz</b>
Min. Qty: 200 pcs or 50 pounds	5 Digit: 0.323	0.125	5 Digit: 0.24	0.042
Min. Size: 6.125" x 11.5"	3 Digit: 0.416	0.218	3 Digit: 0.365	0.167
Max. Size: 12" x 15"	ADC: 0.472	0.274	ADC: 0.43	0.232
Weight: Less than 16 oz.	MXD ADC: 0.507	0.309	MXD ADC: 0.488	0.29
Exceeds 1 or more letter dimension		plus per		plus per
Thickness: .25-.75"		pound 0.793		pound 0.793

# POSTAGE RATE ESTIMATE REFERENCE

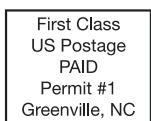
BASED ON BULK MAILINGS FOR GREENVILLE NC \*rates subject to change

E-DATE  
JAN  
2020

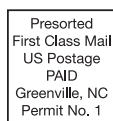
MAILING TYPE				ACCULINK AUTOMATED RATE			
<b>OCCUPANT (Letter)</b>				<b>Up to 3.5 oz</b>			
Min. Qty:	200 pcs or 50 pounds	Carrier (none-saturation):		0.191			
Min. Size:	3.5" x 5"	Carrier (none-high density):		0.209			
Max. Size:	6.125" x 11.5"	Carrier (none-basic):		0.294			
Thickness:	.007-.25"						
<b>OCCUPANT (Flat)</b>		<b>Greenville Rate</b>	<b>Up to 4.0 oz</b>	<b>Over 4.0 oz</b>	<b>Outside Greenville Rate</b>	<b>Up to 4.0 oz</b>	<b>Over 4.0 oz</b>
Min. Qty:	200 pcs	Carrier (DDU-saturation):	0.163	0.072	Carrier (none-saturation):	0.224	0.072
Min. Size:	6.125" x 11.5"	Carrier (DDU-high density):	0.189	0.098	Carrier (none-high density):	0.25	0.098
Max. Size:	12" x 15"	Carrier (DDU-basic):	0.254	0.126	Carrier (none-basic):	0.302	0.126
Weight:	Less than 16 oz.			plus per		plus per	
Exceeds 1 or more letter dimension				lb. 0.365			lb. 0.609
Thickness:	.25-.75"						
<b>OCCUPANT NONPROFIT LETTER</b>				<b>Up to 3.5 oz</b>			
Min. Qty:	200 pcs or 50 pounds	Carrier (none-saturation):		0.111			
Min. Size:	3.5" x 5"	Carrier (none-high density):		0.124			
Max. Size:	6.125" x 11.5"	Carrier (none-basic):		0.209			
Thickness:	.007-.25"						
<b>OCCUPANT NONPROFIT FLAT</b>		<b>Greenville Rate</b>	<b>Up to 4.0 oz</b>	<b>Over 4.0 oz</b>	<b>Outside Greenville Rate</b>	<b>Up to 4.0 oz</b>	<b>Over 4.0 oz</b>
Min. Qty:	200 pcs	Carrier (DDU-saturation):	0.075	0.027	Carrier (none-saturation):	0.136	0.027
Min. Size:	6.125" x 11.5"	Carrier (DDU-high density):	0.105	0.057	Carrier (none-high density):	0.166	0.057
Max. Size:	12" x 15"	Carrier (DDU-basic):	0.17	0.084	Carrier (none-basic):	0.218	0.084
Weight:	Less than 16 oz.			plus per		plus per	
Exceeds 1 or more letter dimension				lb. 0.192			lb. 0.436
Thickness:	.25-.75"						

## USPS APPROVED PERMIT INDICIA'S

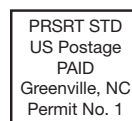
Be sure to comply with these formats and include the proper permit number and city where permit is held.



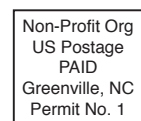
\*FULL RATE  
1ST CLASS  
POSTAGE  
MIN. PIECE 200



PRESORTED  
1ST CLASS  
POSTAGE  
MIN. PIECE 500



PRESORT  
STANDARD  
POSTAGE  
MIN. PIECE 200



STANDARD  
NONPROFIT  
POSTAGE  
MIN. PIECE 200  
*\*must have an approved  
USPS FORM 3623 on File*

1. Presort Standard Flat size mail pieces must have the address in the top half of the piece. If the piece is bound or folded, the address must be in the top half with the bound edge to the right when looking at the address panel.
2. All folded self-mailers **MUST** be on at least 70# paper. Possibly heavier stock will be required if piece weighs over an ounce.
3. All folded self mailers require at least 2 tabs. Possibly more or larger tabs depending on weight.
4. Folded edge for self mailers needs to be on the bottom when looking at address panel. For any other folds contact us at [mailing@acculink.com](mailto:mailing@acculink.com).
5. For any mail jobs that are not a regular job we process, contact us at [mailing@acculink.com](mailto:mailing@acculink.com) to see what would be required to process and mail the job.